

# FS422M

## Continuous Additive Manufacturing System

► [www.farsoon-gl.com](http://www.farsoon-gl.com)



### DESIGNED FOR PRODUCTION

The FS422M is the second generation metal laser powder bed fusion system designed under the CAMS concept offering continuous production capability. With its expanded build envelope size 425 x 425 x 550 mm, the FS422M is capable of producing large metal parts for aerospace, automotive and manufacturing industries. Equipped with high-precision digital scanning system and quad 500W or 1000W lasers configuration, the FS422M offers optimal volume build rate for significantly improved throughput for industrial scale series production.

### HIGH QUALITY, REPEATABLE PARTS

Equipped with advanced multi-laser scanning strategy and calibration algorithms, the FS422M offers optimal build efficiency, and uniformed part performance in overlapping areas. Continuous close-loop top-feed powder delivery system, optimized in-chamber gas flow, and inert gas protection allow for uniform melting process of metal powder. Powerful build process control and real-time re-coating monitoring ensure the optimal industrial build quality.

### COST PERFORMANCE

The integrated permanent filter system allows for the processing of active materials with lifespan more than 10 years. In addition, like all Farsoon machines the FS422M is a truly open platform which offers the user a high degree of control to tailor processing parameters for industrial application requirements and cost-competitive metal additive manufacturing.

# FARSOON FS422M

## TECHNICAL DATA

## FS422M-H-4

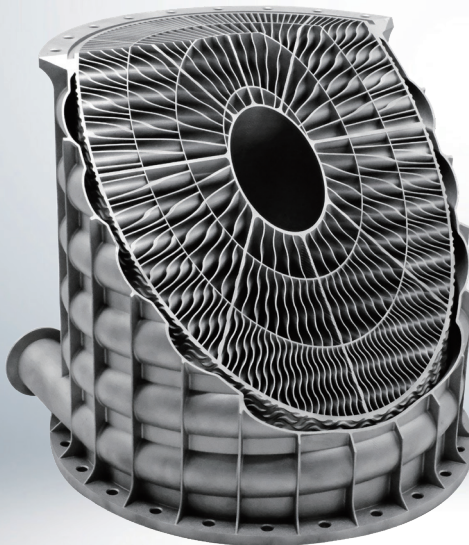
|  |   |
|--|---|
| <b>External Dimensions</b> (L×W×H)   | 5000mm×2900mm×2700mm (196.9×114.2×106.3 in)   |
| <b>Build Cylinder Size</b> (L×W×H)<br>(Height incl. build plate)               | 425mm×425mm×550mm (16.7×16.7×21.7 in)   |
| <b>Effective Build Size</b> <sup>1</sup> (L×W×H)<br>(Height incl. build plate) | 419mm×419mm×550mm (16.5×16.5×21.7 in)   |
| <b>Net Weight</b>  | Approx. 3700 KG (8157.1 lb)   |
| <b>Layer Thickness</b> <sup>2</sup>  | 0.02~0.1 mm (0.0008-0.0039 in)  |
| <b>Scanning Speed</b>  | Fiber Laser, 4×500W or 4×1000W<br>Fiber Laser, 4×1000W (Beam Shaping)   |
| <b>Laser Type</b>  | Max. 10 m/s (32.8 ft/s)   |
| <b>Scanner</b>   | F theta lenses  |
| <b>Inert Gas Protection</b>  | Argon/Nitrogen  |
| <b>Average Inert Gas Consumption in Process</b>                                | 3-5 L / min   |
| <b>Operating System</b>  | 64 bit Windows 10   |
| <b>Comprehensive Software</b>  | BuildStar, MakeStar®  |
| <b>Key Software Features</b>   | Open machine key parameters, real-time build parameter modification, three-dimensional visualization, diagnostic function, support-add function |
| <b>Data File Format</b>  | STL   |
| <b>Power Supply</b>  | EUR/China: 400V±10%, 3~/N/PE, 50Hz, 30A US: transformer sold with machine   |
| <b>Operating Ambient Temperature</b>   | 22-28°C (71.6-82.4°F)   |
| <b>Materials</b> <sup>3</sup>  | 316L, AlSi10Mg, IN718, Ti6Al4V, TA15*, HX*, HAYNES 230*, IN625*, AlMgSc*, CuCrZr*, CuSn10*, Pure Copper*, more materials to come                |

<sup>1</sup> The functional build volume depends on the parts/materials.

<sup>2</sup> Farsoon's Beam Shaping Technology can offer even larger layer thickness. Contact us for more details.

<sup>3</sup> The materials marked with \* are in the build process development.

Many factors may affect the performance characteristics of products. We recommend that you make tests to determine the suitability of a product for your particular purpose prior to use. Farsoon makes no warranties of any type, express or implied, including but not limited to, the warranties of merchantability or fitness for a particular use. This also applies regarding the consideration of possible intellectual property rights as well as laws and regulations. Farsoon reserves the right to change the technical data without notice. Farsoon®, Buildstar®, Makestar® are registered trademarks of Farsoon Technologies. Last Change: 2026-04



### PART : IN-LINE TUBE & SHELL HEAT EXCHANGER

SIZE: 412×412×380 MM (16.2×16.2×15.0 IN)

MATERIAL: AlSi10Mg

SYSTEM: FS422M-H-4

[www.farsoon-gl.com](http://www.farsoon-gl.com)

**AMEA** Farsoon Technologies Co., Ltd. | +86.731.8397.6198 | [globalinfo@farsoon.com](mailto:globalinfo@farsoon.com) | No. 2710 Yuelu West Boulevard, Yuelu District, Changsha, Hunan, China

**AMERICAS** Farsoon Americas CORP. | +1 512-551-9901 | [contact@farsoonam.com](mailto:contact@farsoonam.com) | 3161 Eagles Nest Street, Suite 350, Round Rock, TX 78665

**EUROPE** Farsoon Europe GmbH | +49 70316325822 | [wehelpyou@farsoon-eu.com](mailto:wehelpyou@farsoon-eu.com) | Industriestraße 5/1, 71069 Sindelfingen, Germany