

FS721M-8-CAMS

Continuous Additive Manufacturing Solution

▶ www.farsoon.com



LARGE-FORMAT BUILD SOLUTION

The FS721M-8-CAMS is the large-format metal laser powder bed fusion system integrated with the CAMS concept offering continuous production capability. Combined with its expanded rectangular build size of 720 x 420 x 390 mm, the FS721M-8-CAMS is the ultimate series manufacturing tool for large-format applications in automotive, tooling, and other manufacturing industries.

SERIES PRODUCTION CAPABILITIES

Equipped with a large build cylinder, powerful eight 500W or 1000W fiber lasers, and a highly efficient digital scanning system, the FS721M-8-CAMS can boost productivity up to 300cm³/h targeting series manufacturing. The integrated conveyor system and exchangeable cartridge strategy of the FS721M-8-CAMS enable continuous production capability and intensive manufacturing turnovers with minimal machine downtime between the build jobs.

QUALITY + REPEATABLE PARTS

The FS721M-8-CAMS features many features and capabilities for enhanced part quality and repeatability, like high-performance digital optics, customized multi-laser scanning strategies, and process parameters for higher productivity and uniformed performance in multi-laser overlapping zones. The advanced closed-loop powder handling system and an integrated permanent filtration module are offered for enhanced operational ease and safety.

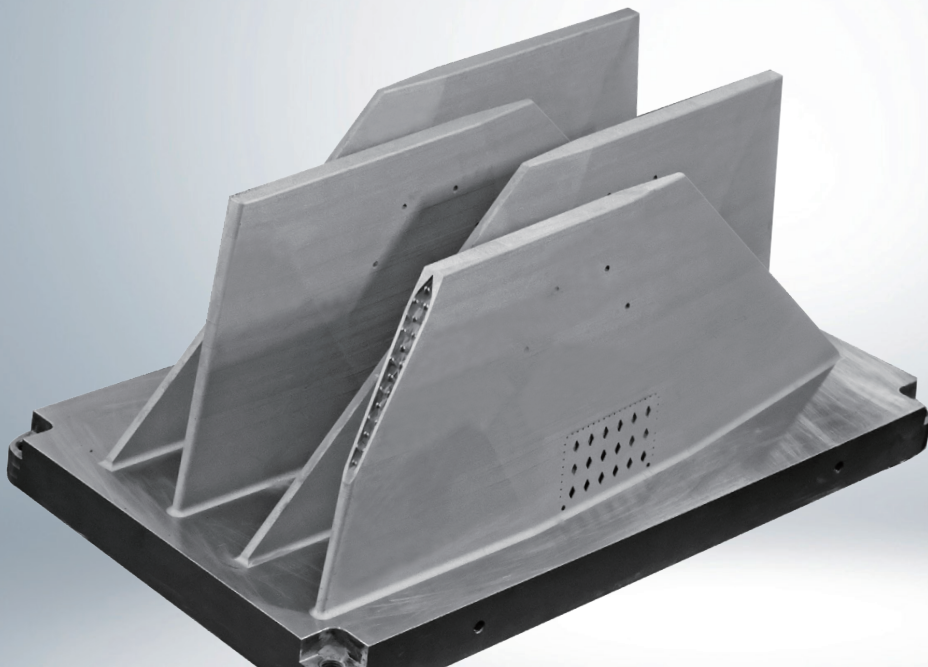
FARSOON FS721M-8-CAMS

TECHNICAL DATA	FS721M-8-CAMS
External Dimensions (L×W×H)	5700mm×1550mm×2500mm (224.4×61.0×98.4 in)
Build Cylinder Size¹ (L×W×H)	720×420×390 mm (28.3×16.5×15.4 in) (Height incl. build plate)
Net Weight	Approx. 4500 kg (9920.8 lb)
Layer Thickness	0.02~0.1 mm (0.0008-0.0039 in)
Scanning Speed	Max. 10.0 m/s (32.8 ft/s)
Laser Type	Eight Lasers, 8×500W or 8×1000W
Scanner	F theta lenses
Inert Gas Protection	Argon/Nitrogen
Average Inert Gas Consumption in Process	6-8 L / min
Operating System	64 bit Windows 10
Comprehensive Software	BuildStar, MakeStar [®]
Key Software Features	Open machine key parameters, real-time build parameter modification, three-dimensional visualization, diagnostic functions
Data File Format	STL
Power Supply	EUR/China: 400V±10%, 3~/N/PE, 50Hz, 60A US: transformer sold with machine
Operating Ambient Temperature	22-28°C (71.6-82.4°F)
Materials²	316L, 17-4PH, TA15, Ti6Al4V, AISi10Mg, Al5250, IN718*, HX*, Maraging Steel Grade 300*, more materials to come

1 The functional build volume depends on the parts/materials.

2 The materials marked with * are in the build process development.

Many factors may affect the performance characteristics of products. We recommend that you make tests to determine the suitability of a product for your particular purpose prior to use. Farsoon makes no warranties of any type, express or implied, including but not limited to, the warranties of merchantability or fitness for a particular use. This also applies regarding the consideration of possible intellectual property rights as well as laws and regulations. Farsoon reserves the right to change the technical data without notice. Farsoon®, BuildStar®, MakeStar® are registered trademarks of Farsoon Technologies. Last Change: 2024-03



WING RUDDER WITH LIGHT WEIGHT STRUCTURE
SIZE: 665 (L)*55(W)*252(H)MM EACH
MATERIAL: IN718
SYSTEM: FS721M-8-CAMS

www.farsoon.com

AMEA Farsoon Technologies Co., Ltd. | +86.731.8397.6198 | globalinfo@farsoon.com | No. 181 Linyu Road, Changsha National High-Tech Industrial Zone, Hunan, China

AMERICAS Farsoon Americas CORP. | +1 512-551-9901 | contact@farsoonam.com | 3161 Eagles Nest Street, Suite 350, Round Rock, TX 78665

EUROPE Farsoon Europe GmbH | +49 711 13796 0 | wehelpyou@farsoon-eu.com | Liebknechtstrasse 33, 70565 Stuttgart, Germany